

## DATABASE/APPLICATIONS DEVELOPMENT

RPI has extensive experience in making use of developments in information technology to provide our clients with better ways to collect, access and visualize natural resource information. Our staff has extensive experience in the following areas:

- Creating complex relational databases for the storage and analysis of natural resource data
- Developing customized desktop GIS applications for multiple software packages
- Design custom field data collection software for use with Global Positioning System (GPS) units and/or other analytical instruments

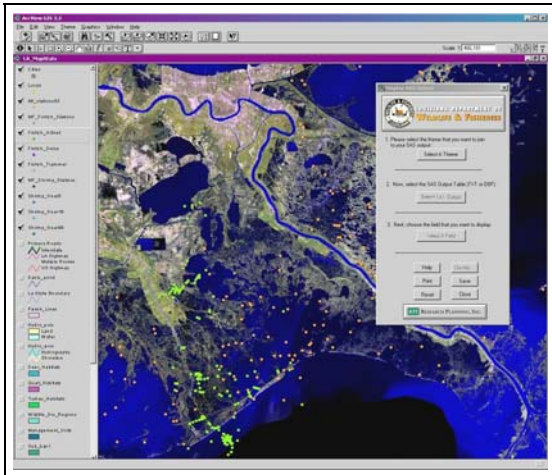
In addition, we offer authorized sales of ESRI's Arcview® and ArcGIS® desktop and ArcPad® mobile GIS software, as well as training and services for these packages, enabling us to offer turn-key digital solutions for natural resource data management.

### ArcGIS Application Development

MapStats

Client: Louisiana Department of Wildlife and Fisheries

RPI assisted the Department of Wildlife and Fisheries by developing a customized interface for the ESRI ArcView GIS software used by the DWF.



The application streamlined the integration of output from existing statistical software, allowing the rapid display and spatial analysis of nearshore fisheries data.

### ArcPad Field Data Collection Application Development

Client: Kingdom of Saudi Arabia, Presidency for Meteorology and the Environment

RPI designed custom field data collection software for the Kingdom of Saudi Arabia's Oiled Shoreline Survey. This application was designed for ESRI's ArcPad and was deployed on multiple ruggedized field computers. The application interfaced with GPS and barcode scanner hardware and allowed the rapid collection of large amounts of field data.



### South Florida Area Contingency Plan

Client: Florida Department of Environmental Protection

RPI developed online web-enabled Area Contingency Plans (ACPs) for the multiple petroleum distribution and storage facilities in south Florida for the Florida Department of Environmental Protection. These ACPs integrated multiple documents, printable static maps, and interactive GIS for incident responders, managers, and regulators.

### Environmental Information System

Client: Mesoamerican Barrier Reef System EIS

The World Bank, in concert with other organizations, chose RPI to design an Environmental Information System (EIS) to store diverse environmental data sets from multiple countries. RPI met the challenges involved with the low-cost deployment of hardware and software for complex data in two languages.